

Meridian Integrated RAN
Release 2.0
Telephone Set-Based Administration



User Guide

NORTEL
NORTHERN TELECOM

Contents

Introduction	1
Login menu	2
Main menu	4
Recording an announcement	7
Assigning an announcement	10
Reviewing channel assignments	12
Example of using the TUI	14

MIRAN TUI ACCESS CODE: _____

MIRAN USERS:

User name	User password	Channel authority
admin (default)	admin000 = 23646000 (default)	0-7, A0, A1 (default)
user (default)	user0000 = 87370000 (default)	0-1 (default)

MIRAN TUI CHANNEL ASSIGNMENTS:

Channel	Announcement filename	Announcement description
0		
1		
2		
3		
4		
5		
6		
7		
A0 (90)		
A1 (91)		

Introduction

A telephone user interface (TUI) within the MIRAN application enables you to access the application from *any* dual-tone multifrequency (DTMF) telephone. (The DTMF telephone can be either internal or external to your PBX system.) Use the TUI for quick modification of announcements and other easy tasks. You must handle large changes through the text-based user interface or the browser user interface (BUI). For more information about the text-based user interface and the BUI, refer to *Meridian Integrated RAN Description, installation, and operation* (553-3001-112).

The TUI enables you to do the following:

- record new announcements
- play announcements
- assign and unassign announcements to MIRAN channels
- review current channel assignments
- access the MIRAN card security ID

You *cannot* do the following through the TUI:

- set the MIRAN card clock
- assign time-of-day restrictions to announcements
- access system configuration functions
- change passwords

You cannot access the TUI while another uses the TUI or the text-based user interface.

The TUI enables you to log on and issue commands through the dialpad of your Meridian Digital Telephone or any standard DTMF telephone. For security, logon requires a valid user name and password, which the system administrator supplies. The MIRAN card does not identify itself until you enter a valid user name and password. The following pages describe the TUI menus.

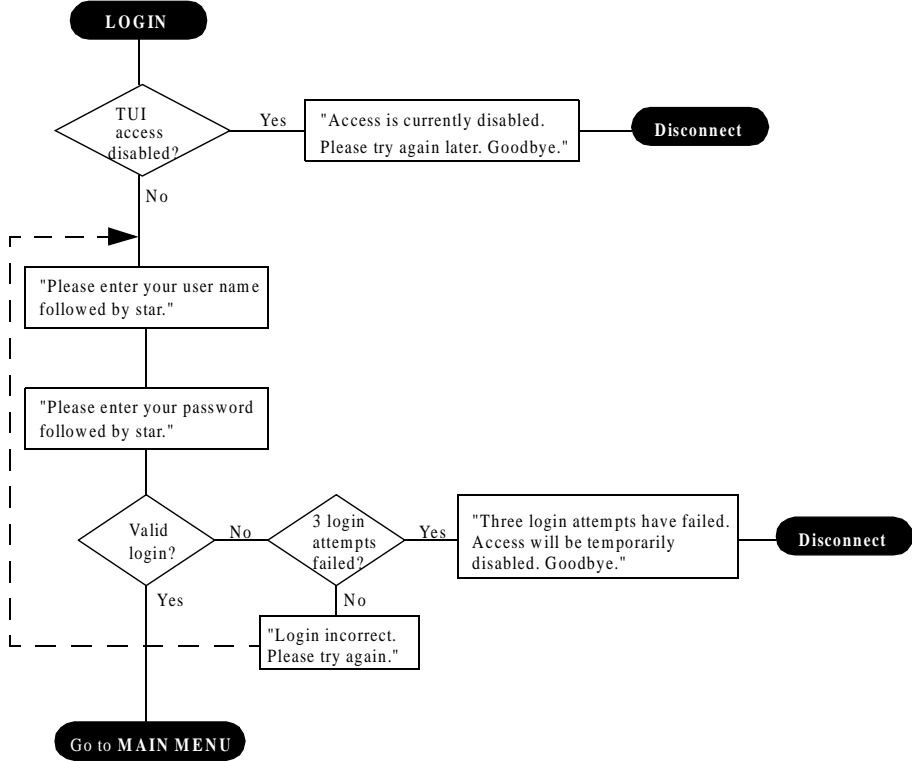
Login menu

First contact your system administrator for the access number to the MIRAN card and your user name and password. To login to your MIRAN card, do the following:

- 1 Go off-hook.
- 2 Dial the access code of the MIRAN card.
- 3 At the voice prompt, enter followed by your user name and .
- 4 At the next voice prompt, enter your password followed by .

If the login is valid, the TUI brings you to the Main menu. If the login is *not* valid after three attempts, the system disables your access for 20 minutes. Refer to the flowchart on page 3 for further information.

Login menu



Main menu

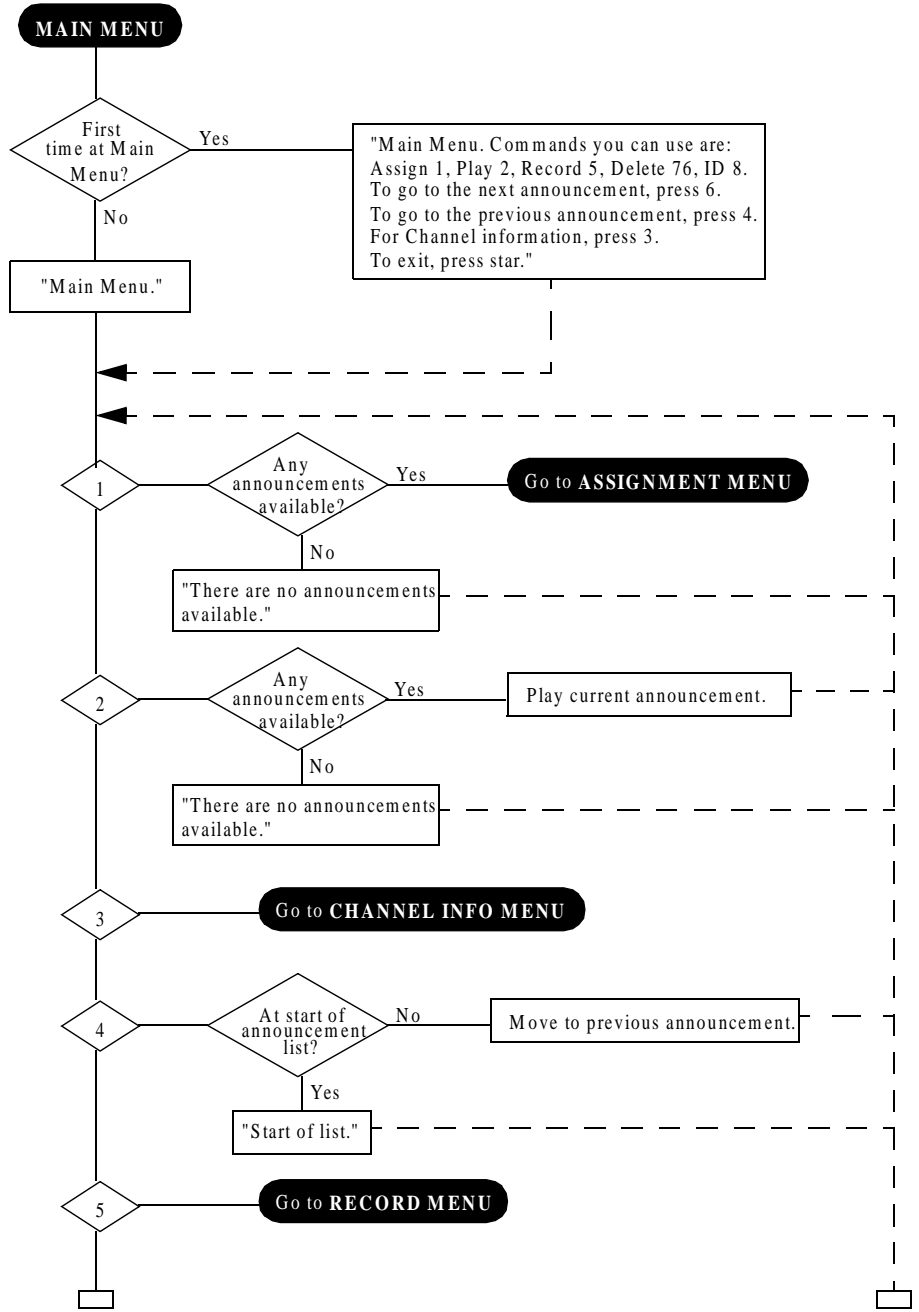
When you enter the Main menu, a recorded announcement lists your options for this menu. At the Main Menu you can do the following:

- Press **1** to assign the current announcement to one or more channels.
- Press **2** to play the current announcement.
- Press **3** to review channel assignments.
- Press **4** to go to the previous announcement.
- Press **5** to record an announcement.
- Press **6** to go to the next announcement.
- Press **7 6** to delete the current announcement.
- Press **8** to hear the 8-digit MIRAN security ID.
- Press ***** to stop an announcement that is playing.
- Press **9** to hear the list of options again.
- Press ***** to log out (if no announcement is playing).

When you press **7 6** to delete the current announcement, you also remove all channel assignments that use the announcement.

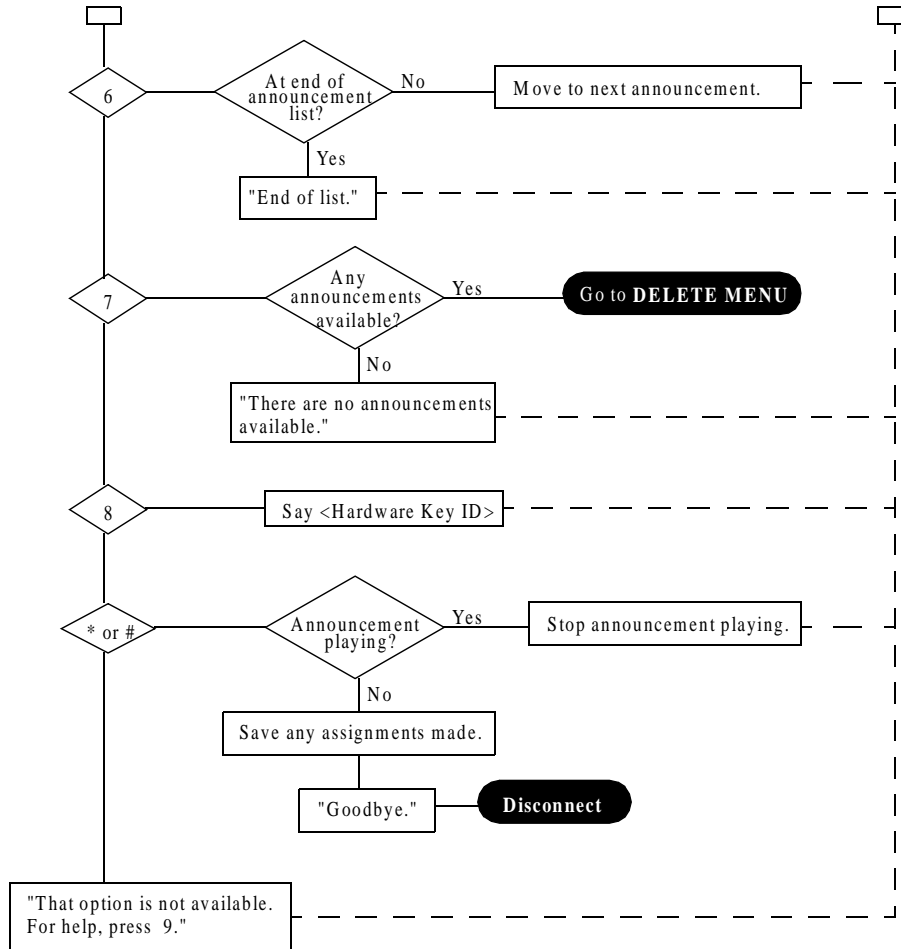
Refer to the flowchart on pages 5 and 6 for further information.

Main menu



Main menu

Main menu (continued)



Recording an announcement

Through the TUI, you can record an announcement, which you can assign to channels either through the TUI, the text-based user interface, or the BUI. To record an announcement, do the following:

- 1 At the Main menu, press **5** to enter the Record menu.
- 2 At the Record menu, press **5** to begin recording.
- 3 Press ***** to end recording.

Note: If you reach the drive capacity *while* you are recording, the recording stops automatically.

- 4 Press **2** to review the announcement, and/or press **5** to record the announcement again. (This step is optional.)
- 5 Press **1** to save the announcement.

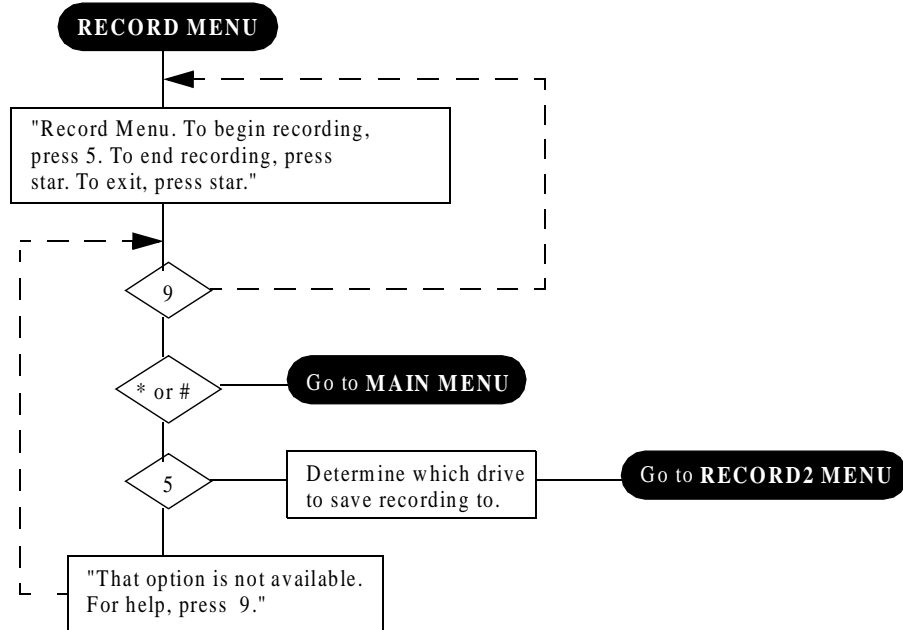
When you save the announcement, MIRAN assigns it a filename of the form “ANN<MsgID>”, where <MsgID> is the announcement number. MIRAN adds the announcement to the first disk volume with available space of at least 64 kbytes or 8 seconds of recording. The TUI then returns you to the Main menu.

Note: Except while you are recording an announcement, you can press **9** for help and ***** to return to the Main menu.

Refer to the flowcharts on pages 8 and 9 for further information.

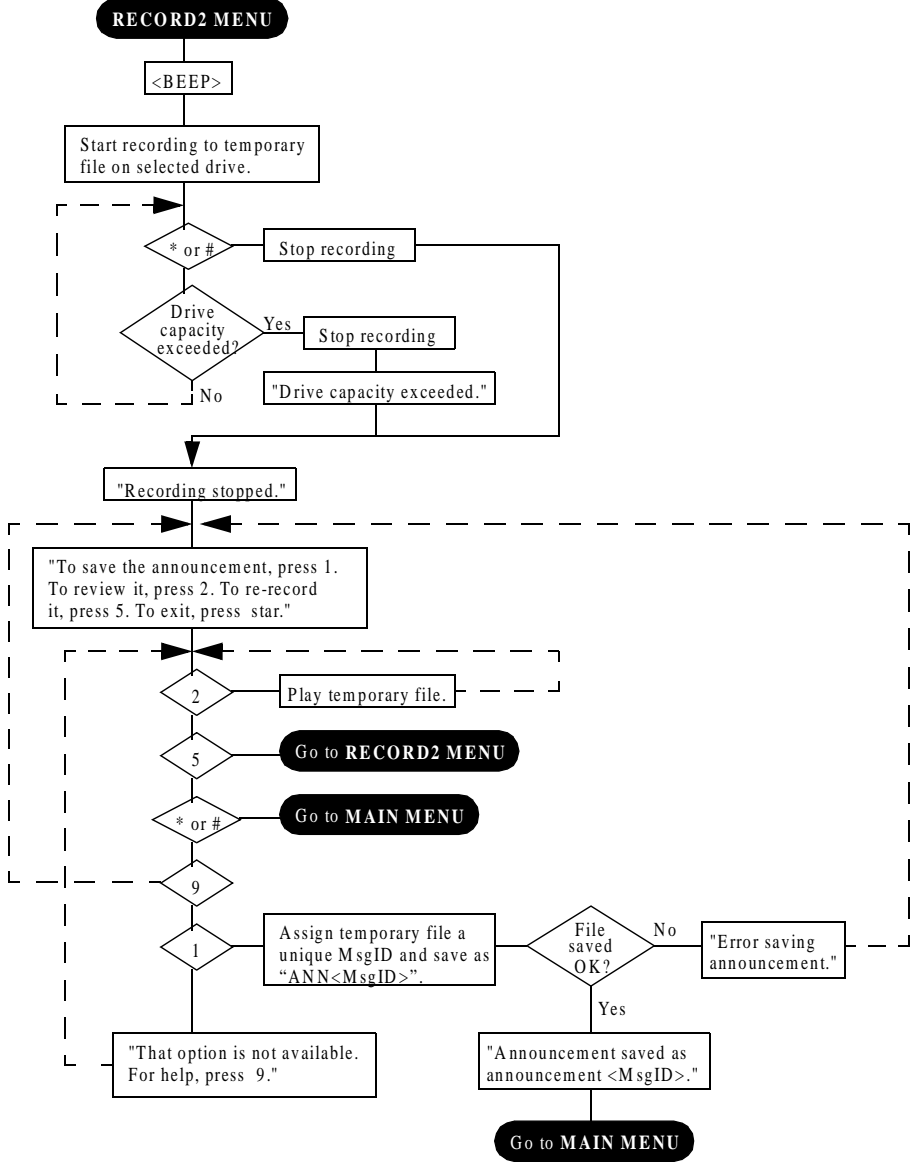
Recording an announcement

Record menu



Recording an announcement

Record 2 menu



Assigning an announcement

Through the TUI, you can assign an announcement to one or more channels—0 to 7, 90, or 91. Channels 0 to 7 are the internal, one-to-one channels; channels 90 and 91 are the external, cross-connect channels A0 and A1, respectively. It is not recommended that you assign an announcement to channel 7, because the MIRAN card uses channel 7 for the TUI.

Note: You *can* assign an announcement to channel 7, but it won't play unless the administrator reprograms channel 7 as a RAN trunk.

To assign an announcement to a channel, do the following:

- 1 At the Main menu, select the announcement you want to assign. (You can press **2** to know what the current announcement is; you can press **4** to go to the previous announcement or **6** to go to the next announcement.)

Note: You must have the announcement you want to assign in place as the current announcement before you enter the Assignment menu.

- 2 At the Main menu, press **1** to enter the Assignment menu.
- 3 Enter the list of channels you want to assign the announcement to. (Press ***** after each channel to separate it from the next channel.)
- 4 Press ***** a second time to end the list.

For example, at the Assignment menu enter

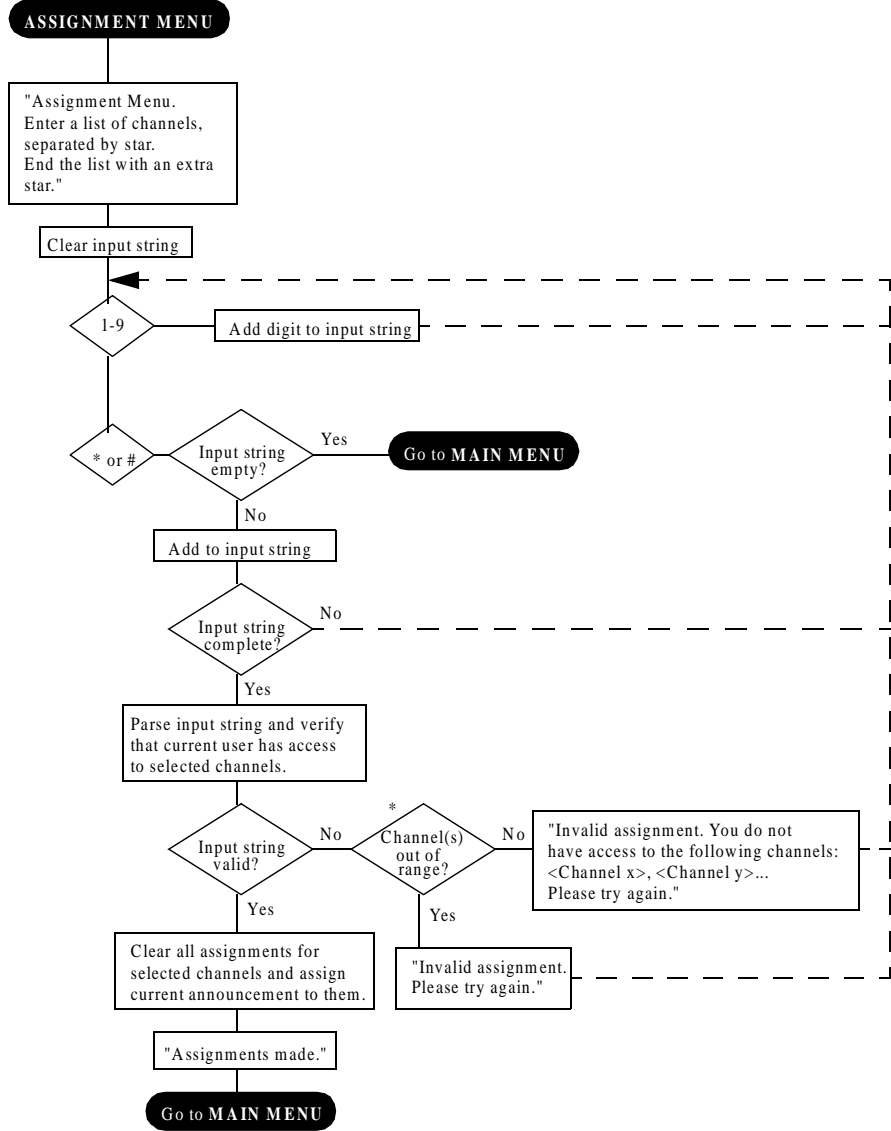
1 * 2 * *

to assign the current announcement to channels 1 and 2. If the channel assignment is not valid, the TUI asks you to try again. If the channel assignment is valid, the MIRAN card clears *all* assignments to the selected channels and assigns the current announcement to them. The TUI announces a successful assignment and returns you to the Main menu.

Note: Announcement assignment through the TUI cannot include time and date restrictions. To restrict an announcement on a channel to particular times and days, make the assignment through the text-based user interface or BUI.

Refer to the flowchart on page 11 for further information.

Assignment menu



* Valid channels are 0-7, 90 (Analog0), and 91 (Analog1).

Reviewing channel assignments

Through the TUI, you can query the MIRAN card for information about its channels. In the Channel Information menu, you can hear the announcements that are assigned to each channel.

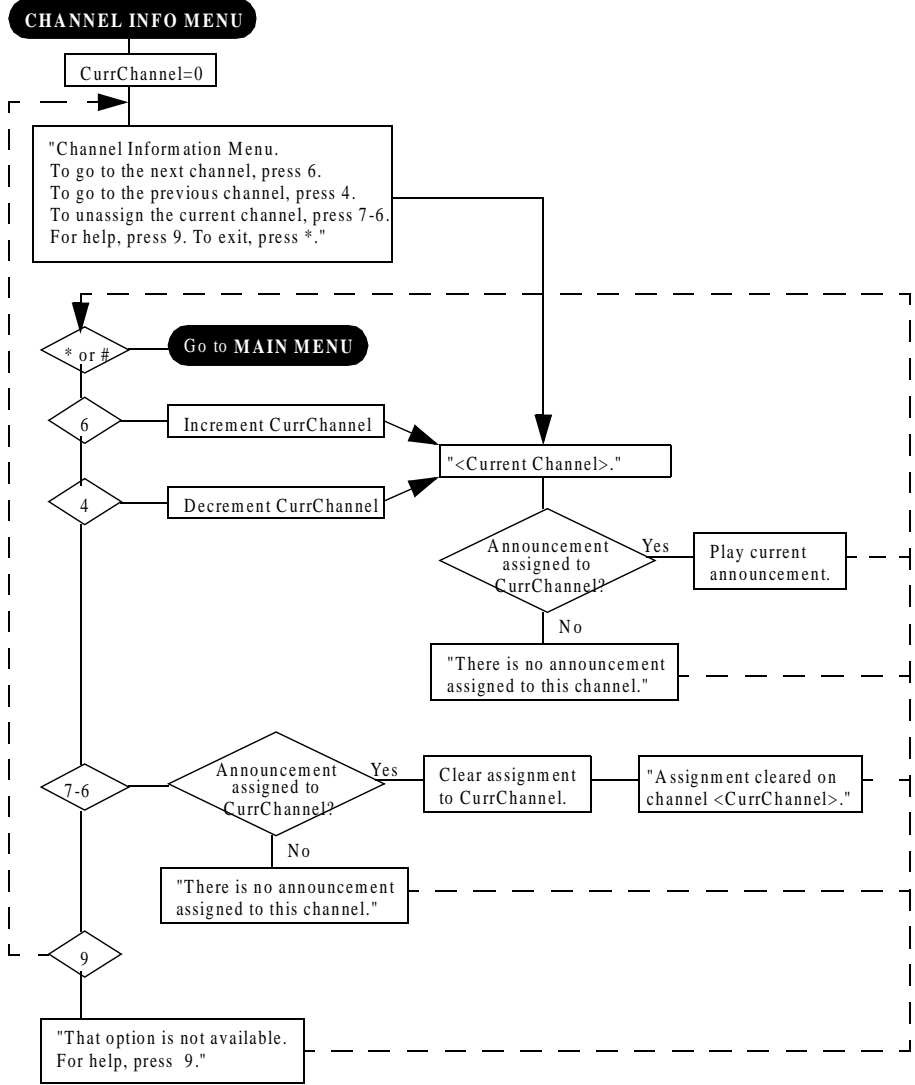
Press **3** at the Main menu to enter the Channel Information menu. At the Channel information menu, you have the following options:

- Press **4** to go to the previous channel.
- Press **6** to go to the next channel.
- Press **7 6** to remove the assignment from the current channel.
- Press **9** for help.
- Press ***** to return to the Main menu.

Unlike deleting an announcement in the Main menu, pressing **7 6** in the Channel Information menu only removes the assignment from the current channel. Pressing **7 6** in the Channel Information menu does not delete the announcement.

Refer to the flowchart on page 13 for further information.

Channel Information menu



Example of using the TUI

The following table provides an example of the steps you must follow to record a new announcement and assign it to a MIRAN channel.

Step	User action	MIRAN response	Comments
1	Go off-hook.	Not Applicable	
2	Dial the access code for the MIRAN card.	Voice prompt for user name	
3	Enter # , user name, then * .	Voice prompt for user password	
4	Enter the password, followed by * .	“Main Menu”	You receive a “Login incorrect” message for wrong input.
5	Press 5 to access the Record menu.	Voice menu of options available	
6	Press 5 to record the announcement.	<BEEP>	Records one message into temporary file.
7	Press * to stop recording.	Menu of available options	Recording stops.
8	Press 2 to verify the announcement.	Plays message from temporary file	If the announcement is acceptable, save it.
9	Press 1 to save the announcement.	“Announcement saved as announcement <MsgID>”; “Main Menu”	The message is saved to the storage device and becomes the currently selected message.
10	Press 1 to assign the announcement to MIRAN channel(s).	“Assignment menu. Enter a list of channels separated by star. End the list with an extra star.”	
11	Enter list of channels separated by * . (Follow last channel by * * .)	“Assignments made”; “Main Menu”	The MIRAN assigns the announcement to the selected channels(s).
12	Press * to exit MIRAN.	“Good-bye”	The TUI disconnects you from the MIRAN.
13	Go on-hook.	Not Applicable	

Title to and ownership of Meridian SL-1 software shall at all times remain with Nortel Networks. Meridian SL-1 software shall not be sold outright and the use thereof by the customer shall be subject to the parties entering into software agreement as specified by Nortel Networks.

Information contained in this document is subject to change. Nortel Networks reserves the right, without notice, to make changes in equipment design or program components as progress in engineering, manufacturing or technology may warrant.

Ordering number: **P0888275**
Issue **1.00**

Printed in the United States
of America
July 1999

NORTEL
NETWORKS™